



Welcome to Westwood Primary School



WESTWOOD
PRIMARY SCHOOL

Parents Engagement for P5 and P6 Students 2024

To provide positive education
that nurtures thriving teachers
and flourishing pupils



WESTWOOD
PRIMARY SCHOOL
Singapore



Healthy Coping



In the Moment



Emotions of Positivity



Thinking Mindfully



Relating Well



Values-Driven Actions

Inspiring a future-ready, anchor-steady community that flourishes and thrives

The Westwood School Leadership Team



Mr Andrew Mah
Principal



Mr Low Min Chye
Vice Principal



Mr Chee Chit Yeng
Vice Principal



Ms Patricia Chong
Vice Principal
(Administration)



The Westwood Upper Primary Consortium



WESTWOOD
PRIMARY SCHOOL



Mr Andrew Mah
Principal
Andrew_MAH@schools.gov.sg



Mdm Sophia Tan
YH/Upper Pri
Tan_seok_yee_Sophia@moe.edu.sg



Ms Dawn Sia
AYH/Upper Pri
sia_pei_fen_dawn@moe.edu.sg

Inspiring a future-ready, anchor-steady community that flourishes and thrives

OVERVIEW

- What Went Well
- How PSLE Scoring Works
- How S1 Posting Works
- Indicative PSLE Score Ranges for Individual Secondary Schools
 - Understanding the PSLE Score Ranges
 - School Choice Journey
- DSA





OVERVIEW



WESTWOOD
PRIMARY SCHOOL

How PSLE Scoring Works

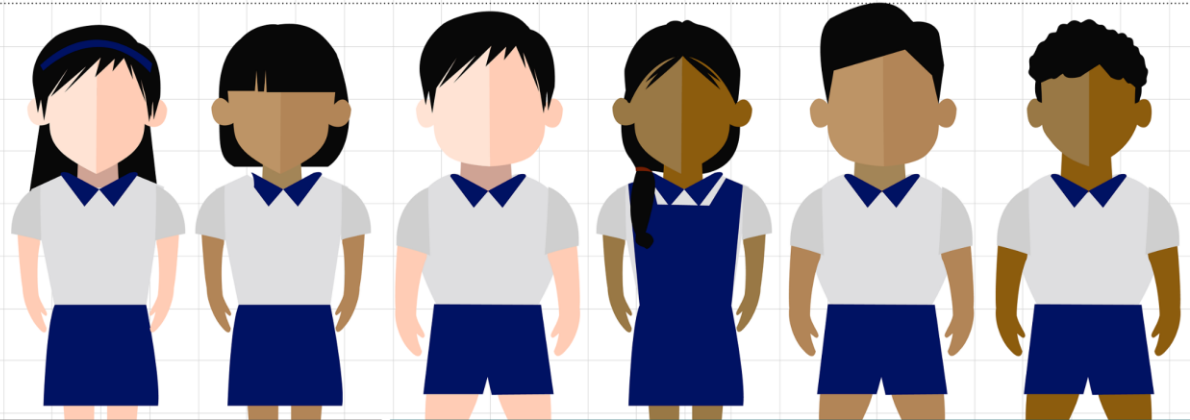


Inspiring a future-ready, anchor-steady community that flourishes and thrives

WIDER SCORING BANDS

Standard		Foundation	
AL	Reference Raw Mark Ranges	AL	Reference Raw Mark Ranges
1	≥ 90		
2	85 – 89		
3	80 – 84		
4	75 – 79		
5	65 – 74		
6	45 – 64	A	≥ 75
7	20 – 44	B	30 – 74
8	< 20	C	<30

PSLE SCORING BANDS



PSLE SCORE	SUBJECT ELIGIBILITY AT START OF S1
26 – 30*	G1
25	G1 OR G2
23 – 24	G2
21 – 22	G2 OR G3
4 – 20	G3

***AL7 or better for Math and English**

- Students will have a score of AL1 - 8 for each subject
- * With AL7 or better in both English and Mathematics
- Students taking the G1 or G2 suite of subjects can take individual subjects at a more demanding level if they perform well

4 SUBJECT ALs WILL BE ADDED TO FORM THE OVERALL PSLE SCORE

ENGLISH LANGUAGE AL 3

MOTHER TONGUE LANGUAGE AL 2

MATHEMATICS AL 1

SCIENCE AL 2

PSLE SCORE: 8



PSLE SCORE	SUBJECT ELIGIBILITY AT START OF S1		
26 – 30*	G1		
25	G1	OR	G2
23 – 24	G2		
21 – 22	G2	OR	G3
4 – 20	G3		



Full Subject-Based Banding (Full SBB)

Inspiring a future-ready, anchor-steady community that flourishes and thrives

Rationale of Full SBB

Full SBB aims for students to:



Have **greater ownership of their learning** according to their strengths, interests, abilities, talents and learning needs



Develop a **growth mindset and an intrinsic motivation** to learn for life



Have **more opportunities to interact with friends** of different strengths, interests, abilities and talents



Have **more options for post-secondary pathways**, while ensuring they have strong fundamentals and can thrive in their chosen pathway

Inspiring a future-ready, anchor-steady community that flourishes and thrives

Secondary school experience under Full SBB

Secondary school experience

1. Mixed form classes upon entering secondary school
2. Common curriculum subjects at lower secondary
3. Subjects to be offered at G1, G2 or G3, mapped from the standards of the N(T), N(A) and Express subject levels respectively
4. Greater flexibility to offer subjects at various subject levels
5. Shift away from stream-based subject offerings

After PSLE

Start of secondary school

End of secondary school

Post secondary

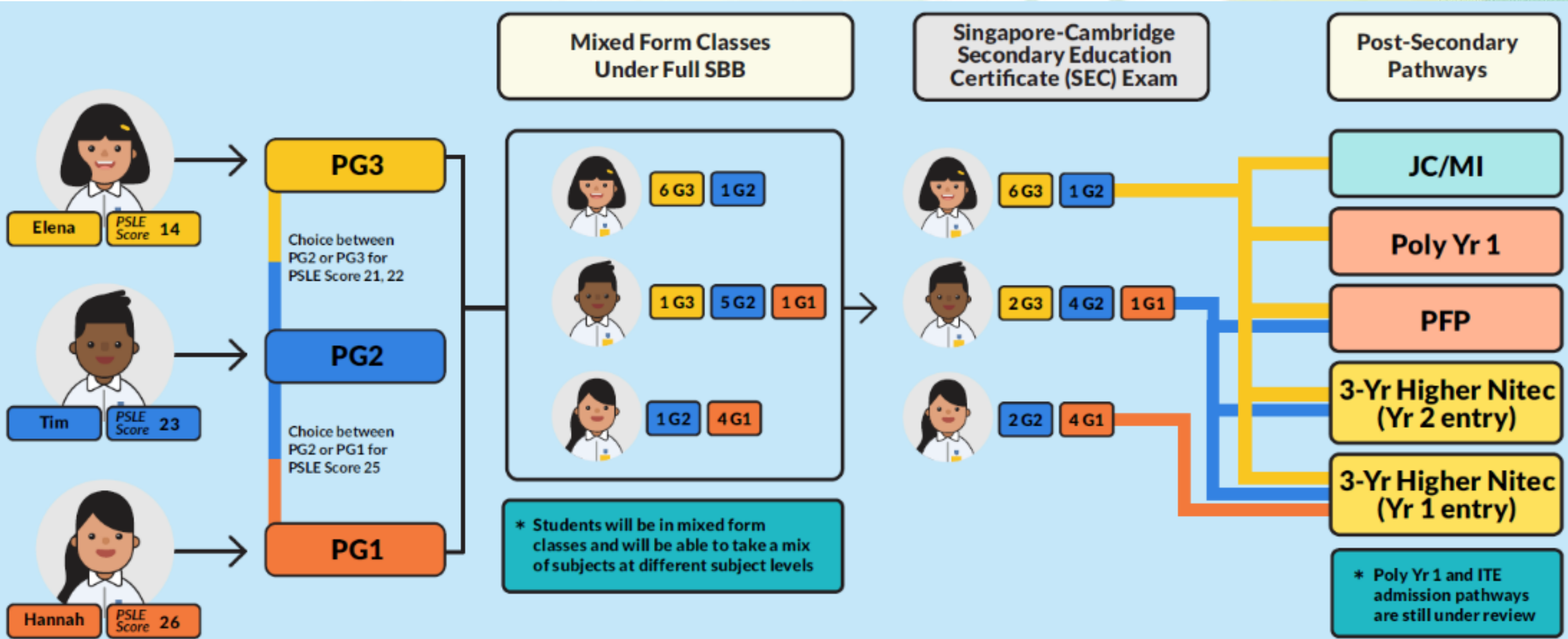
Entry to Secondary 1

Through Posting Groups
(i.e., PG1, PG2 or PG3)

**Singapore-Cambridge
Secondary Education
Certificate (SEC)
examination**

**Revised post-
secondary
admission
criteria**

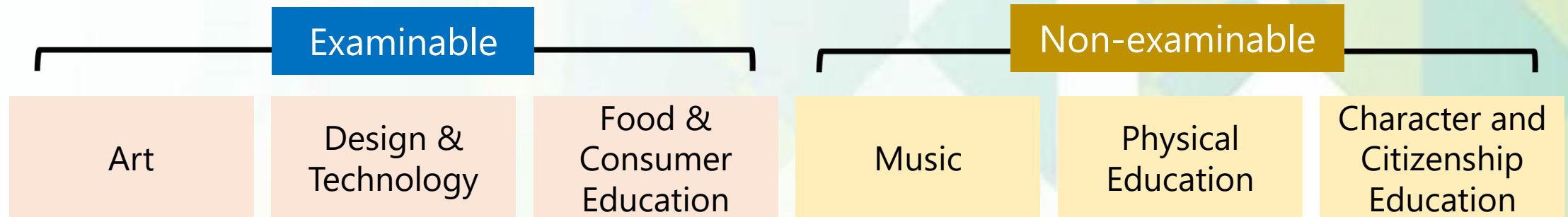
Secondary school experience under Full SBB



Inspiring a future-ready, anchor-steady community that flourishes and thrives

Common Curriculum Subjects

- Students will take **six common curriculum subjects** with their form class classmates:



- These subjects take up approximately one-third of curriculum time, giving students time to interact with classmates of different strengths and interests.

Inspiring a future-ready, anchor-steady community that flourishes and thrives



SUBJECT-BASED BANDING (SECONDARY) [SBB (SEC)] ELIGIBILITY CRITERIA

- Students in G3 Course **CAN** take all subjects at **G3**
- G2 and G1 courses have **greater flexibility**

FOR STUDENTS OFFERED G2 OR G1 COURSE	
PSLE SUBJECT GRADE	OPTION TO TAKE SUBJECT AT
AL 5 or better in a Standard level subject	G3
AL 6 or better in a Standard level subject <u>OR</u> AL A in a Foundation level subject	G2

Offering Subjects at Less Demanding Levels

- Students can offer to take subjects at a less demanding level based on the following considerations:

Mother Tongue Languages:

Indicative level of most subjects at start of Secondary 1	PSLE Grade (Standard Mother Tongue Language)	PSLE Grade (Foundation Mother Tongue Language)	Option to offer at
G3	AL 6	AL A	G2
	AL 7-8	AL B-C	G1 or G2
G2	AL 7-8	AL B-C	G1

English Language, Mathematics and/or Science:

Indicative level of most subjects at start of Secondary 1	PSLE subject level for English Language, Mathematics and/or Science	Option to offer at
G3	Foundation level	G2

SUBJECT-BASED BANDING (SECONDARY) [SBB (SEC)] ELIGIBILITY CRITERIA

G2
English

G2
Mother Tongue

G3
Math

G2
Science

With SBB

Bryan

ENGLISH	AL6
MOTHER TONGUE	AL6
MATHEMATICS	AL5
SCIENCE	AL6

PSLE SCORE: 23
Offered PG2 course



Subject Level Flexibility at Secondary Education

- Beyond the start of Secondary 1, students may adjust their subject levels across their secondary school journey.
- E.g. Students can also offer English Language, Mathematics, Science and/or Mother Tongue Languages at a more demanding level from Secondary 1 Semester 2.

Current subject level	School-based results	Option to offer subject at
G1	≥75% in the specific subject	G2 starting from next semester
G2	≥75% in the specific subject	G3 starting from next semester



OVERVIEW



WESTWOOD
PRIMARY SCHOOL

How Sec 1 Posting Works



Inspiring a future-ready, anchor-steady community that flourishes and thrives

CHOICE ORDER OF SCHOOLS WILL MATTER MORE

- Academic merit, i.e. PSLE Score,
- Same PSLE Score vie for the **last remaining place**, tie-breakers will be used in the following order:
 1. CITIZENSHIP
 2. CHOICE ORDER OF SCHOOLS
 3. COMPUTERISED BALLOTING





WESTWOOD
PRIMARY SCHOOL

INDICATIVE PSLE SCORE RANGES FOR INDIVIDUAL SECONDARY SCHOOLS



Inspiring a future-ready, anchor-steady community that flourishes and thrives

INDICATIVE PSLE SCORE RANGES FOR ALL SECONDARY SCHOOLS

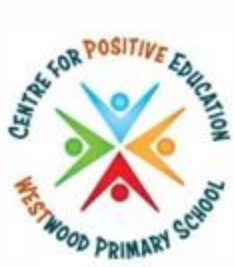


SchoolFinder Tool



<https://www.moe.gov.sg/schoolfinder>

- PSLE Score ranges for individual secondary schools are **indicative** as they were simulated using the **2022 PSLE** cohort results and students' school choices in that same year.
- Similar to the T-score system, the school's PSLE Score range may **vary from year to year**
- **Indicative** PSLE Score serves as a **guide**



SchoolFinder

Explore schools based on their distance from your home, locations, CCAs, subjects and programmes offered.



WESTWOOD
PRIMARY SCHOOL

Search for schools near you

Enter your postal code

[Clear](#)

OR

Search for schools by area

Jurong West ▼

Admission type ▲

Direct School Admission (DSA)

Co-curricular activities (CCAs) ▼

Subjects ▼

Electives and programmes ▼

Indicative PSLE score range of 2020 ▲

i What does indicative mean?

PSLE score

From

To

[Clear](#)

Specialised support ▼

Area: Jurong West ×

PSLE aggregate range: 4 ~ 22 ×

Boon Lay Secondary School

📍 Jurong West
11 Jurong West Street 65, S648354



Fuhua Secondary School

📍 Jurong West
5 Jurong West Street 41, S649410



Hua Yi Secondary School

📍 Jurong West
60 Jurong West St 42, S649371



Jurong Secondary School

📍 Jurong West
31 Yuan Ching Road, S618652

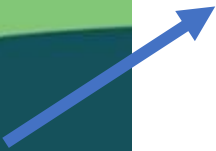
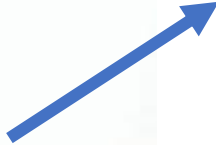


Jurong West Secondary School

📍 Jurong West
61 Jurong West Street 65, S648348



Juying Secondary School



at flourishes and thrives



MOE'S SCHOOLFINDER



WESTWOOD
PRIMARY SCHOOL

Hua Yi Secondary School



Jurong West
[60 Jurong West St 42, S649371](#)
School code: 3226



PSLE score range of 2022

	Affiliated	Non-affiliated
Posting Group 3	-	10 - 16
Posting Group 2	-	21 - 23
Posting Group 1	-	25 - 26

Subjects offered

Electives and programmes



INDICATIVE PSLE SCORE RANGES FOR INDIVIDUAL SECONDARY SCHOOLS

PSLE Score range refers to the PSLE Score of first and last student admitted in previous year

Example

XX Secondary School
Indicative PSLE Score range of 2021

Posting Group 3	15 – 20
Posting Group 2	21 – 24
Posting Group 1	25 – 28

Indicative = based on past year, may change

Indicative PSLE Score of first student posted

Indicative PSLE Score of last student posted into the school

USE OF HIGHER CHINESE LANGUAGE (HCL) FOR ADMISSION INTO SAP SCHOOLS



Inspiring a future-ready, anchor-steady community that flourishes and thrives









HCL POSTING ADVANTAGE FOR ENTRY TO SAP SCHOOLS WILL CONTINUE*



*For more information on the posting advantage to SAP schools, please visit the [PSLE-Full Subject Based Banding \(PSLE-FSBB\) Microsite](#)

- Students' HCL results will be denoted as 'D' (Distinction), 'M' (Merit) or 'P' (Pass).
- Students will be ranked taking into account their performance in HCL.
- This posting advantage applies before the tie-breakers for S1 Posting.

1st		7	NO HCL
2nd		8	DISTINCTION
3rd		8	MERIT
4th		8	PASS
5th		8	NO HCL
6th		9	DISTINCTION

EXAMPLE OF AN SAP SCHOOL'S INDICATIVE PSLE SCORE RANGE

- While students need not take HCL to enter SAP schools, students who pass HCL receive a posting advantage for admission. To reflect this, the indicative PSLE Score ranges of SAP schools include the HCL grades of the first and last student admitted in the previous year via S1 Posting.

Example

XX Secondary School
Indicative PSLE Score range of 2022

Posting Group 3	5 (D) – 12 (P)
Posting Group 2	
Posting Group 1	

Indicative PSLE Score and HCL grade of the first student posted into the school in the Express course

Students who scored better than the school's COP, whether they take HCL, in this particular posting exercise would have been admitted to the school

Indicative PSLE Score and HCL grade of the last student posted into the school in the Express course [i.e. the school's Cut-Off Point (COP)]



SAP Secondary Schools

- Anglican High School
- Catholic High School
- CHIJ Saint Nicholas Girls' School
- Chung Cheng High School (Main)
- Dunman High School
- Hwa Chong Institution
- Maris Stella High School
- Nan Chiau High School
- Nan Hua High School
- Nanyang Girls' High School
- River Valley High School
- 圣公会中学
- 公教中学
- 圣尼各拉女校
- 中正中学（总校）
- 德明政府中学
- 华侨中学
- 海星中学
- 南侨中学
- 南华中学
- 南洋女子中学校
- 立化中学



**Government &
Government-aided schools**

COURSE	INDICATIVE AL COP RANGE FOR 2019 PSLE
Express [Integrated Programme (IP)]	7-9
Express (O-level)	8-22
Normal (Academic)	22-25
Normal (Technical)	26-30

Autonomous Schools

COURSE	INDICATIVE AL COP RANGE FOR 2019 PSLE
Express (IP)	7-9
Express (O-level)	8-16
Normal (Academic)	22-25
Normal (Technical)	26-29

Independent schools

COURSE	INDICATIVE AL COP RANGE FOR 2019 PSLE
Express (IP)	6-8
Express (O-level)	8-10





WESTWOOD
PRIMARY SCHOOL

IP Schools - Year 1 through Year 4	Junior college partner for JC1 and JC2
Catholic High School	Eunoia Junior College
CHIJ St. Nicholas Girls' School	
Singapore Chinese Girls' School	
Nanyang Girls' High School	Hwa Chong Institution
Hwa Chong Institution (Sec)	
Raffles Girls' School	Raffles Institution
Raffles Institution (Secondary)	
Victoria School	Victoria Junior College
Cedar Girls' Secondary School	
Dunman High School	6-year Programme
National Junior College	
River Valley High	
Temasek Junior College	
IP – IB Programme	International Baccalaureate
Anglo-Chinese School (Independent)	6-year programme
Methodist Girls' School	Anglo-Chinese School (Independent)
St. Joseph's Institution	6-Year

Inspiring a future-ready, anchor-steady community that flourishes and thrives



CHOOSING A SUITABLE SECONDARY SCHOOL



WESTWOOD
PRIMARY SCHOOL



Inspiring a future-ready, anchor-steady community that flourishes and thrives

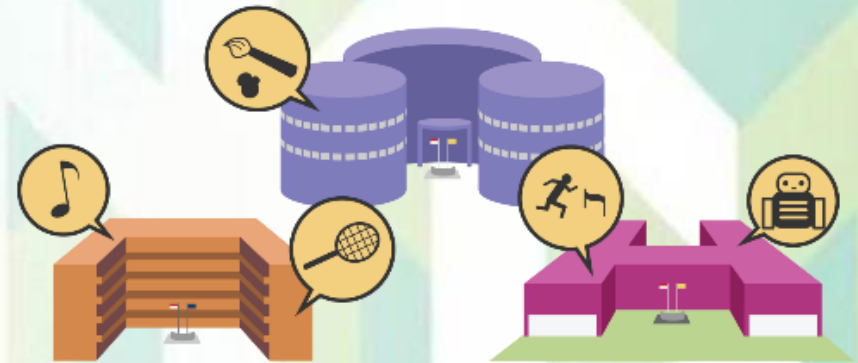
CONSIDERATIONS FOR CHOOSING A SECONDARY SCHOOL

When making school choices in order to find a school that would help the child learn and thrive best:

CONSIDER



AND



YOUR CHILD'S LEARNING NEEDS

WHAT SCHOOLS CAN OFFER



CONSIDERATIONS FOR CHOOSING A SECONDARY SCHOOL



Consider your child's strengths, interests and abilities

- Discuss with your child
 - **School culture:**
 - **Programmes, subjects and CCAs offered:**
 - **Location and transport options:**
- Shortlist schools that offer programmes that cater to the child's **strengths and interests**, and that provide suitable learning environments



PREPARING FOR S1 POSTING EXERCISE



WESTWOOD
PRIMARY SCHOOL

- Use all **6 options** with a **range** of Cut-Off Points
- Take **reference** from schools' PSLE Score ranges in previous years
- Consider **Distance**
- Shortlist schools that offer programmes that cater to the **student's strengths and interests**, and that provide suitable learning environments
 - Virtual Open Houses, school websites
 - SchoolFinder and the MySkillsFuture Portal for information on the schools
- **Rank** your preferred school higher in your school choice order
 - This will increase the students' chances of being posted to that school, if there is a tie-breaker.

PREPARING FOR S1 POSTING EXERCISE

SchoolFinder
Tool



- Release of PSLE results
- Submission of Secondary 1 Option Form

- Release of School Posting results

OCTOBER

NOVEMBER

DECEMBER

RESOURCES

1 SchoolFinder Tool



<https://go.gov.sg/secschoolfinder>

2 Open House Dates

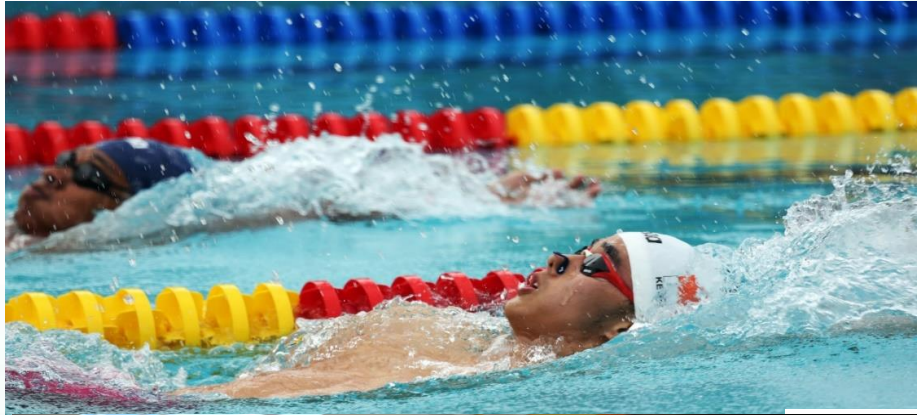


(June Holidays onwards)

<https://www.schoolbag.edu.sg/story/open-house-for-secondary-schools-2023>

3 WEstories





Direct School Admission for Secondary Schools (DSA-Sec)

Inspiring a future-ready, anchor-steady community that flourishes and thrives

Entering a secondary school



PSLE/S1 Posting Process

- Based on a student's **PSLE score**
- Most students enter secondary schools this way

DSA-Sec

- Based on a diverse range of **talents** and achievements in specific academic subjects or non-academic areas, beyond what the PSLE recognises
- Allows students to access school programmes to develop their talents



WESTWOOD
PRIMARY SCHOOL

DSA Intake

- All secondary schools - up to 20%
- Integrated Programme (IP) - 30%-35%
- Specialised Independent Schools - 100% of their students through DSA.
 - ✓ NUS High School,
 - ✓ School of the Arts,
 - ✓ School of Science and Technology
 - ✓ Sports School



WESTWOOD
PRIMARY SCHOOL

Please Note

- Students successfully allocated to their DSA-Sec schools will **NOT be allowed to participate in the annual S1 Posting to opt for secondary schools**, and are expected to **honour the commitment to the allocated DSA-Sec school** for the entire duration of the programme to develop their talents.
- They will also **NOT be allowed to transfer to another school** after the release of the PSLE results.



Who can apply?



Primary 6 students can apply for DSA-Sec based on a wide-range of talents, including:

- **Sports and games**
- **Visual, literary and performing arts**
- **Debate and public speaking**
- **Science, mathematics and engineering**
- **Languages and humanities**
- **Uniformed groups**
- **Leadership (for example, prefects)**



No Hard Copy Submission

- Primary school information will be shared with the secondary schools :
 - ✓ P5 and P6 academic results,
 - ✓ Co-curricular Activities (CCA),
 - ✓ Values in Action (VIA) involvement,
 - ✓ School-based achievements/awards - Edusave awards, NAPFA results, Junior Sports Academy and National School Games
 - ✓ **No Testimonials required**
- Optional field - any non-school-based activities and achievements, which your child may have **participated outside school**.



Direct School Admission for Secondary Schools (DSA-Sec)

- **5 May until 3pm, 1 Jun 2023 for P6 only**
- Interested parents may wish to visit MOE's DSA website (<https://www.moe.gov.sg/dsa-sec>) for more information.
- Selection by face to face interviews/trials

Date for DSA 2024 is not available yet

Examples of Possible Choice Combinations

EXAMPLE 1	Talent(s)	School(s)	up to three different schools,
	Choir	School A	
	Choir	School B	
	Choir	School C	

EXAMPLE 2	Talent(s)	School(s)	two different schools
	Choir	School A	
	String Orchestra	School A	
	Choir	School B	

EXAMPLE 3 (Not allowed)	Talent(s)	School(s)	Your child cannot use all three choices on one school . He/she can leave the third choice blank or choose another school.
	Choir	School A	
	String Orchestra	School A	
	Mathematics	School A	

Which school should my child apply to?

- School with programmes that match child's strengths and interests
- Get latest information about what each school offers by:
 - Visiting schools' websites
 - Attending schools' e-Open Houses to also experience their environments and cultures
 - Visiting the MOE's DSA-Sec website

What are schools looking for?

DSA-SEC SELECTION

- The selection process differs across schools, and across different DSA-Sec categories.
- Generally, schools are looking for candidates with:

Talent, passion, commitment

- Schools may look at **achievements and participation** (e.g. in Junior Sports Academy)

Strong personal qualities

- Schools may look at **CCA records and VIA** participation.
- Schools will also conduct e-interviews.

Good academic fit

- Schools may look at **primary school results** to ensure students can benefit from the school's pace of learning.



SchoolFinder | MOE x School profile page | MOE x +

https://www.moe.gov.sg/schoolfinder?journey=Secondary%20school&q=*&fq=school_journey_ss%3A"Secondary%20school"&fq=admission_types_dsa_b%3...

SchoolFinder

Explore schools based on their distance from your home, locations, CCAs, subjects and programmes offered.

Secondary Search for a school or keywords e.g. "Admiralty" or "football" **SEARCH**

Criteria [Clear all](#)

Location [Clear](#)

Search for schools near you

Enter your postal code

OR

Search for schools by area

Select an area

Admission type

- Direct School Admission (DSA)
- Integrated programme

Secondary schools

Showing 142 Secondary schools

- Admiralty Secondary School**
Woodlands
31 Woodlands Crescent, S737916
- Ahmad Ibrahim Secondary School**
Yishun
751 Yishun Avenue 7, S768928
- Anderson Secondary School**
Ang Mo Kio

1 of 8

Help us improve

ENG 12:55 PM 25/1/2023





(Secondary)



Jurong West
[6 Boon Lay Avenue, S649961](#)



School code: 3103

PSLE score range of 2022



Subjects offered



Electives and programmes



DSA talent areas offered in 2023



- Debating (Girls and Boys)
- Leadership (Girls and Boys)
- Chinese Dance (Girls and Boys)
- Chinese Drama (Girls and Boys)
- Chinese Orchestra (Girls and Boys)
- Choir (Girls and Boys)
- Concert Band (Girls and Boys)



Help us improve

Inspiring a future-ready, anchor-steady community that flourishes and thrives



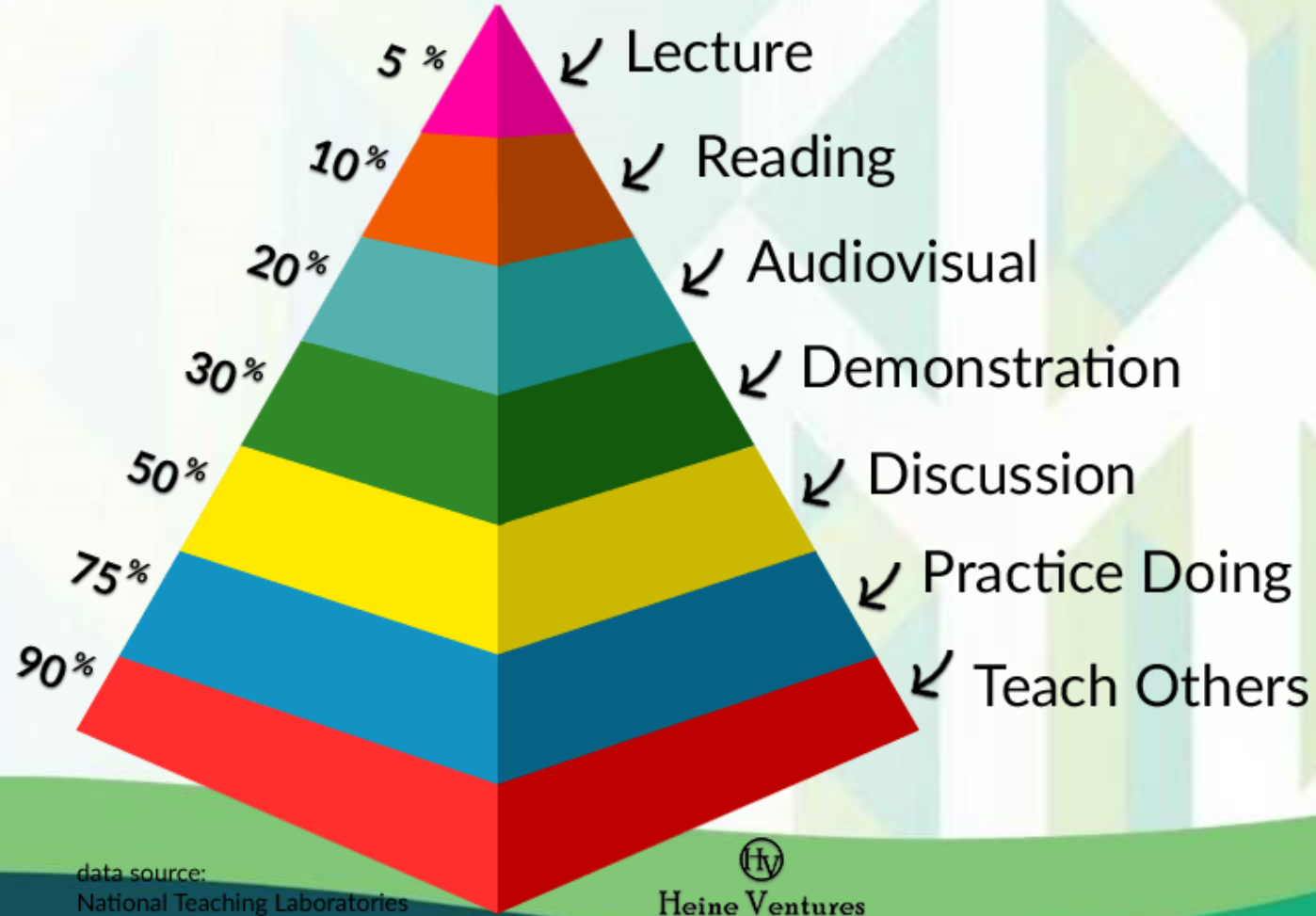
PSLE 2024



*PSLE	Dates
Oral Examinations	Tue, 13 Aug - Wed, 14 Aug
Listening Comprehension	Fri, 13 Sep
Written Examinations	Thu, 26 Sep - Wed, 2 Oct
Marking Exercise	Mon, 14 Oct to Wed, 16 Oct

THE LEARNING PYRAMID

average student retention rates



data source:
National Teaching Laboratories


Heine Ventures

Inspiring a future-ready, anchor-steady community that flourishes and thrives



How we will help your child

- **Growth Mindset**
- **Target setting workshop at P6**
- **Adaptive Learning Systems in Mathematics**
- **Student Centric Support**

Inspiring a future-ready, anchor-steady community that flourishes and thrives



WESTWOOD
PRIMARY SCHOOL



WESTWOOD
PRIMARY SCHOOL

Adaptive Learning Systems

Inspiring a future-ready, anchor-steady community that flourishes and thrives

All these
worksheets are
too easy...

I think they are too
hard! How I wish we
have homework
catered to our
different ability levels!



Differentiated Learning

Inspiri

at flourishes and thrives

I am weak in fractions! How I wish I can focus on fractions questions!

I am weak in geometry! How I wish we have homework focussed on what we need to improve in!

Adaptive Content



Adaptive learning - delivery of custom learning to address the needs of individual students through just-in-time feedback, pathways, and resources



...g great ...ly, anchor-steady ... that flourish...



What is KiteSense



WESTWOOD
PRIMARY SCHOOL

- **AI-enabled online tutor** with resources powered by **The Learning Lab**.
- Allows for differentiated learning for the different ability groups.
- Provides **AI-enabled feedback for self-directed learning** while using the programme.

Please see notice on Parent's Gateway dated 12 Jan 2024 for more information.

Inspiring a future-ready, anchor-steady community that flourishes and thrives



WESTWOOD
PRIMARY SCHOOL

SINGAPORE

Student
Learning
Space

Primary 5



Adaptive Learning System (ALS)

AVAILABLE NOW FOR P5 MATH

- Students are able to have personalised and guided resources.
- System is guided based on student's mastery level.
- Resources are curated by MOE.

Inspiring a future-ready, anchor-steady community that flourishes and thrives



P5 ALS & P6 KiteSense – How you can help



WESTWOOD
PRIMARY SCHOOL

- Both systems are self-directed learning systems.
- Students are required to access the systems themselves to benefit.
- School will help out those with **no / limited access**.

If your child encounters problems, please contact:

P5 ALS: SLS helpdesk

Email: helpdesk@sls.ufinity.com

Tel: 6702 6513

P6 KiteSense: Mr Gerard Ng, HOD ICT (Covering)

Email: ng_zhili_Gerard_Christian@schools.gov.sg



AI Math Tutor (KiteSense) affordance programme



Day	Time	Remarks
Fridays (all normal school day Fridays)	ICT Lab 1 open from 2pm-3.30pm.	Requires Pre-registration.
Term Breaks	ICT Lab 1 will be open from 8am – 12pm on certain dates. Parents will be notified on the dates.	Requires Pre-registration.



AI Math Tutor (KiteSense) affordance programme



WESTWOOD
PRIMARY SCHOOL

As space is limited, only students who:

- 1. Do not have access to laptops or tablets,**
- 2. Requires the conducive environment of his/her School for studies**

Refer to Parent's Gateway announcement during this weekend.

How to reduce Careless Mistakes?

- **Avoid skipping several steps** at one time.
- Manage your **time** well
- Answer the right question. **Break down** long questions
- **Highlight** (underline/circle) for keywords / numbers / information
- **Keep track** of your mistakes made during practice and **check** them during examinations.

How to reduce Careless Mistakes?

- Habit of **checking**
- Check for **errors** in copying and transfer
- Check the **units**
- Check the calculations and do a **REVERSE-CHECK**. Put your answer back into the maths problem or equation to check.
- Check for **logic**



Parents:



WESTWOOD
PRIMARY SCHOOL

- **Partner** the School Teachers
- Encourage – **Growth Mindset**
- **Know** your child - Don't stress child unnecessarily
- Be **available** for your child
- **Balance** study with play
- Be watchful about **food and health**

Parents:

- Whole family is **involved**
- A **Happy** family is a conducive family
- Provide a **conducive** study area
- Provide a **routine** for studying
 - How long?
 - When is a good time?
- Help child **manage** study time, **distractions**
- Help child **set realistic goals, start small**



Inspiring a future-ready, anchor-steady community that flourishes and thrives

I CAN, YOU CAN, WE CAN

1. Embrace a growth mindset “I CAN” – **small goals**
2. Be a Compassionate Leader “YOU CAN” – **teach others**
3. Flourishing Westwoodian - “WE CAN” – **Family and School support**



P5 Highlights to look forward to!



Tentative Dates	Programme Highlights
<p>3 Jan – 5 Jan and On-going Weekly THRIVE Lessons</p>	<ul style="list-style-type: none"> • Student Initiated Programmes & Class Bonding Activities (Looking forward to ideas from you!) • P5 ICT Baseline Programme (You did it during induction week!)
<p>16 April to 19 April</p>	<p>THRIVE WEEK</p> <ul style="list-style-type: none"> • Picnic @ school field • P5 Science Learning Journey (Science Centre) • MAKER VIA Project
<p>May</p>	<ul style="list-style-type: none"> • 4D3N Overseas Learning Journey to Hong Kong (50% subsidised)
<p>16 July to 19 July</p>	<p>THRIVE WEEK</p> <ul style="list-style-type: none"> • What I want to learn day • P5 3D2N Outdoor Learning Adventure Camp (Character Strengths)
<p>*8-29 JUL (One Sat)</p>	<ul style="list-style-type: none"> • P5 NE Show
<p>Term 4 Week 10</p>	<ul style="list-style-type: none"> • P5 and P6 Upper Primary Consortium Prize Giving Day



WESTWOOD
PRIMARY SCHOOL

P5 Assessment

Inspiring a future-ready, anchor-steady community that flourishes and thrives



2024 P5 Assessment Dates

Subject	Week/Dates
P5 Term 1 Papers	20 Feb to 26 Feb
P5 Term 2 Papers	22 April to 29 April
P5 Term 3 Papers	26 July to 1 Aug
P5 Term 4 Papers	8 October to 23 October

P6 Highlights to look forward to!

Tentative Dates	Programme Highlights
<p>3 Jan – 5 Jan</p>	<ul style="list-style-type: none"> • P6 Class Bonding Activities • Level Picnic @ School Field (Plan B: Hall)
<p>20 Jun and 21 Jun</p>	<ul style="list-style-type: none"> • P6 Motivational Camp & Games Day
<p>Term 2 Weeks 9 and 10</p>	<ul style="list-style-type: none"> • Science Learning Journeys (Lee Kong Chian Historical Museum)
<p>9 Oct – 14 Nov</p>	<p>P6 Post Exam Activities</p> <ul style="list-style-type: none"> • Graduation Day • P6 SEP programme • Career Fair • CCA Experience Day • P6 Code for Fun and Video Maker Programme <p>(Looking forward to student-initiated programmes and ideas from you too!)</p> <ul style="list-style-type: none"> ➤ 2D/1N Overseas Learning Journey to Malacca (50% subsidized)
<p>Term 4 Week 10</p>	<p>P5 and P6 Upper Primary Consortium Prize Giving Day</p>



Looking for Career Talk Speaker

Details of Career Talk 2024

- ❖ Target Audience: P6 pupils
- ❖ Suggested period : Post PSLE exam, 7 Oct to 11 Oct
- ❖ Time: During school hour (between 8am-1pm)
- ❖ Venue: P6 classrooms



<https://go.gov.sg/careertalkspeakerinvite>



WESTWOOD
PRIMARY SCHOOL

P6 Assessment

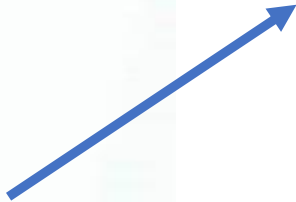
Inspiring a future-ready, anchor-steady community that flourishes and thrives



WESTWOOD
PRIMARY SCHOOL

2024 P6 Assessment Dates

Subject	Week/Dates
P5 Term 1 Papers	20 Feb to 26 Feb
P5 Term 2 Papers	22 April to 29 April
P5 Term 3 Papers	26 July to 2 Aug
P6 PSLE	26 September to 2 October



Target Setting With Mr Mah (P6 2024)

Goal Reality Options What will you do to meet your Goal		<u>Name :</u>	
		Class:	
GOAL:			
<u>CCA:</u>		Interest Areas:	
Name two Dream School of yours		IP/Exp/Normal	Indicative PSLE SCORE (Leave Blank)
1.			
2.			
Reality:			
2023 P5 SA2:			
EL:	%	CL:	%
MA:	%	SC:	%
2024 P6 Mid Year:			
EL:	↑ ↓	CL:	↑ ↓
MA:	↑ ↓	SC:	↑ ↓
EL: AL	↑ ↓	CL: AL	↑ ↓
MA: AL	↑ ↓	SC: AL	↑ ↓
2024 P6 Mid Year AL Score: ↑ ↓			
2023 P6 Prelims			
EL:	↑ ↓	CL:	↑ ↓
MA:	↑ ↓	SC:	↑ ↓
Options: + What to ↑ ?:			
EL:	CL:	MA:	SC:
Which Component	Which Component	Which Topic	Which Topic
How to improve	How to improve	How to improve	How to improve



WESTWOOD
PRIMARY SCHOOL

Community that flourishes and thrives

Standard		Foundation	
AL	Reference Raw Mark Ranges	AL	Reference Raw Mark Ranges
1	≥ 90		
2	85 – 89		
3	80 – 84		
4	75 – 79		
5	65 – 74		
6	45 – 64	A	≥ 75
7	20 – 44	B	30 – 74
8	< 20	C	<30

Government &

Government-aided schools

Autonomous Schools

Independent schools

COURSE	INDICATIVE AL COP RANGE FOR 2019 PSLE	COURSE	INDICATIVE AL COP RANGE FOR 2019 PSLE	COURSE	INDICATIVE AL COP RANGE FOR 2019 PSLE
Express (Integrated Programme (IP))	7-9	Express (IP)	7-9	Express (IP)	6-8
Express (O-level)	8-22	Express (O-level)	8-16	Express (O-level)	8-10
Normal (Academic)	22-25	Normal (Academic)	22-25		
Normal (Technical)	26-30	Normal (Technical)	26-29		

- **MOE SchoolFinder tool** - More information on secondary schools can be found here, on school websites and in the Secondary 1 information booklet given to students in Primary 6.
- **Open Houses** - Secondary schools also hold open houses where you and your child can learn more about the school's programmes, and speak with teachers and students.
- **Indicative cut-off points ranges for different school types**
 - The indicative AL COPs ranges for school types can be used as reference point.
 - MOE will be providing indicative AL COPs for secondary schools in 1H/2023, based on the data from 2023 S1 posting exercise.
 - The actual cut-off points may differ, depending on how students exercise their choices that year.



<https://westwoodpri.moe.edu.sg/others/secondary-school-matters>



WESTWOOD
PRIMARY SCHOOL



ABOUT WESTWOOD ▾

DEPARTMENTS ▾

CCA ▾

OUR PARTNERS ▾

ADMINISTRATION ▾

MK@WESTWOOD ▾

OTHERS ▾



- School Newsletters
- Booklist for 2024
- 2024 P1 Parents
- Joy of Learning Flipbook
- Highlights
- Quicklinks
- Wishing Wall for Teachers
- High-5! Day
- 10Years of Positively Westwood
- Biodiversity@Westwood
- Thriving WWPS
- Secondary School Matters
- Contact Us

Westwood Primary School

A Pos Ed School that nurtures
thriving teachers and flourishing
pupils

PARENT VOLUNTEERS

PARENT SUPPORT GROUP

HIGHLIGHTS

QUICKLINKS

Inspiring a future-ready, anchor-steady community that flourishes and thrives



WESTWOOD
PRIMARY SCHOOL

Don't let yourself
become
so concerned
with raising
a good kid
that you forget
you already
have one.

Glennon Melton • momastery.com

Inspiring a future-ready, anchor-steady community that flourishes and thrives



WESTWOOD
PRIMARY SCHOOL

I Can. You Can. We Can



Inspiring a future-ready, anchor-steady community that flourishes and thrives



Andrew_mah@schools.gov.sg



WESTWOOD
PRIMARY SCHOOL

THANK YOU

positively
WESTWOOD!



Inspiring a future-ready, anchor-steady community that flourishes and thrives